



NUNM Student Resource and Information Packet

Disability and Academic Accommodations

Updated November 2018

CONTACT US

The Center for Academic Success is located in the Academic Building, Room 221.

Director of Academic Success and Access
503.552.1761

ADDITIONAL RESOURCES

NUNM Counseling Center Appointment Line
503.552.1780

NUNM Health Centers
503.552.1551

City of Portland – Neighborhood Involvement and
Accommodation Resources
portlandoregon.gov/oni/28994

Nationwide Disability Programs and Resources
disability.gov

Looking for assistance or resources for human
services? Call 211.

The Center for Academic Success has additional resources including
locations for psychological assessments and academic support resources.

CENTER FOR ACADEMIC SUCCESS



STUDENT DISABILITY AND Accommodation Services



049 SW Porter St.
Portland, OR 97201
nunm.edu/academic-success
503.552.1761

9/2018



WHO QUALIFIES?

All NUNM students, full- or part-time, with a documented disability, may qualify for an accommodation. This includes students with:

- Permanent disabilities
- Temporary disabilities
- Invisible disabilities
- Visible disabilities



WHAT QUALIFIES?

The Americans with Disabilities Act (ADA) identifies an individual with a disability as “a person who has a physical or [psychological] impairment that substantially limits major life activities.”

This could include:

- Permanent disabilities (e.g., hearing loss, rheumatoid arthritis)
- Temporary disabilities (e.g., broken arm from skiing, complications from pregnancy)
- Invisible disabilities (e.g., learning disabilities, psychological diagnosis)
- Visible disabilities (e.g., use of wheelchair or cane)

The 2010 Census showed that 18.7% of Americans (56.7 million people) are living with a disability.

SOURCE: ADA.gov

HOW TO APPLY

Students seeking an accommodation must:

- Schedule an appointment with the director of academic success and access to discuss the accommodation process,
- Complete the online academic accommodation request form, and
- Provide adequate documentation, from a qualified and licensed professional, giving rationale for each requested accommodation.

For the complete Disability and Academic Accommodation Policy and Procedure, please visit the Academic Success webpage at nunm.edu/academic-success.

POLICIES AND PROCEDURES

NUNM and the Center for Academic Success are committed to following Section 504 of the Rehabilitation Act of 1973, the Americans with Disabilities Act of 1990 (as amended by the ADA Amendments Act of 2008 [ADAAA]), and other applicable federal and state regulations and university policies that prohibit discrimination on the basis of a disability.

Students have both rights and responsibilities under the ADA and NUNM policies. These include, but are not limited to:

- An equal opportunity to attain the same level of education as individuals without disabilities
- Reasonable accommodations that do not fundamentally alter a program/class or lower academic standards
- Meet and maintain NUNM’s fundamental academic and technical standards



REASONABLE ACCOMMODATION

A reasonable accommodation is a modification to a course, program or service that enables the qualified student to have an equal opportunity to attain the same achievements and privileges as those available to similarly situated students without disabilities.

However, according to the law, the university is not required to provide “personal services.” Examples include, but are not limited to: private tutoring, personal attendants, or personally prescribed medical devices.

However difficult life may seem, there is always something you can do and succeed at.

STEPHEN HAWKING



NATIONAL UNIVERSITY OF NATURAL MEDICINE

049 SW Porter Street, Portland, Oregon 97201 • 503.552.1555

- 1 Betty Radelet Hall**
Accessible restrooms
Cut curb
Permit parking

- 2 Administration Building**
Accessible restrooms
Cut curb/driveway
Elevator
Permit parking
Ramp (inside and outside)

- 3 Spaulding House**
Cut curb
Ramp (outside)

- 4 Academic Building**
Accessible restrooms
Button triggered door (NW)
Cut curb/driveways
Electrical lift (student lounge)
Elevator (south hallway)
Permit parking (west lot)

- 5 NUNM Health Centers**
Accessible restrooms
Button triggered door
Cut curb/driveways
Elevator
Permit parking

- 6 Helfgott Research Institute**
Accessible restrooms
Cut curb/driveways
Permit parking



Disability and Accommodation Services (Section 16.5 NUNM Student Handbook)

NUNM and the Center for Academic Success are committed to following Section 504 of the Rehabilitation Act of 1973, the Americans with Disabilities Act of 1990 (ADA) as amended in 2008 (ADAAA), and other applicable federal and state regulations and university policies which prohibit discrimination on the basis of a disability. Under these laws students with a documented disability have a right to receive reasonable accommodations.

Students also have responsibilities under these laws. Students are responsible for turning in requests for accommodations within an appropriate time frame, submitting adequate documentation from a qualified medical practitioner, as well as meeting and maintaining NUNM satisfactory academic progress and technical standards.

Students seeking an accommodation must schedule an appointment with the director of academic success and access and complete the "Disability and Academic Accommodation" form available online. An accommodation request must be supported by adequate documentation. Adequate documentation must:

- Be from a qualified professional within their scope of practice and licensure to diagnosis
- Include a brief history of the student's disability, a description and evidence of impairment and any current treatment plans if applicable
- Demonstrate how the disability affects/impacts a particular delivery system, instructional method, or evaluation criteria
- Contain rationale for the requested accommodation(s), clearly explaining why each recommendation for accommodation is appropriate
- Be no older than five (5) years prior to enrollment at NUNM

The Center for Academic Success will make every reasonable effort to accommodate the request in a timely manner but cannot guarantee that an untimely request can be met; untimely requests may result in delay, substitutions or denial of accommodation.

Upon approval of accommodations, the Center for Academic Success will work with the student to notify necessary parties (i.e., faculty, security, facilities, program deans, etc.). Information about the disability is confidential however anonymity is not guaranteed.



Accommodation Request Procedures

“Documented Disabilities” are visible and invisible disabilities which include, but are not limited to, hearing, mobility, learning, and psychiatric diagnosis that substantially limit one or more major life activities. The university is obligated to provide accommodation only to the known limitations of an otherwise qualified student with a documented disability.

Students with a documented disability, who are seeking an accommodation must schedule an appointment with the director of academic success & access and complete the online Community Report form as a “NUNM Student Petitioning for an Accommodation”.

An accommodation request must be accompanied and supported by adequate documentation; adequate documentation must:

- Be from a qualified professional within their scope of practice and licensure to diagnosis
- Include a brief history of the student’s disability, a description and evidence of impairment and any current treatment plans if applicable
- Demonstrate how the disability affects/impacts a particular delivery system, instructional method, or evaluation criteria
- Contain rationale for the requested accommodation(s), clearly explaining why each recommendation for accommodation is appropriate
- Be no older than five (5) years prior to enrollment at NUNM

The Center for Academic Success will process reasonable accommodation requests in a timely manner but cannot guarantee that an untimely request can be met; untimely requests may result in delay, substitutions or denial of accommodation.

Upon approval of accommodations, the director of academic success & access will work with the student to notify necessary parties (i.e., faculty, security, facilities, program deans, etc.). Information about the disability is confidential however anonymity is not guaranteed.

The director of academic success & access will contact the student and discuss why/if the documentation is inadequate and/or if the accommodation(s) requested are deemed unreasonable.

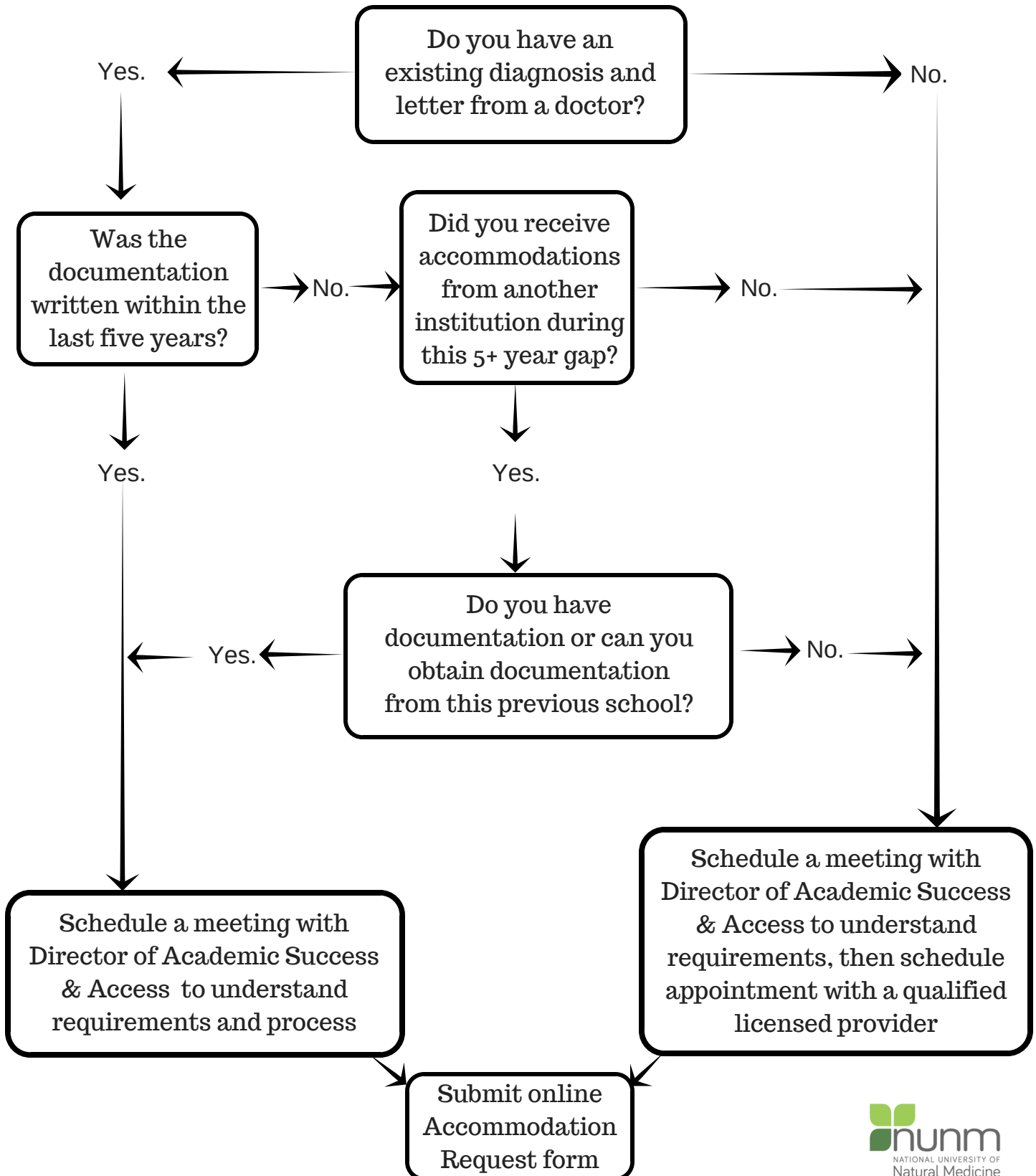
A reasonable accommodation is a modification or adjustment to a course, program, service or activity that enables a qualified student with a disability to have an equal opportunity to attain the same level of achievement or privileges as are available to similarly situated students without disabilities. A reasonable accommodation may not fundamentally alter the nature of the program or activity, lower academic standards, present an undue financial or administrative burden on the university or pose a threat to others or public safety.

Reasonable accommodations are determined by examining:

- The barriers resulting from the interaction between the documented disability and the campus environment
- The possible accommodations that might remove the barriers
- Whether or not the students has access to the course, program, service or activity without an accommodation
- Whether or not essential elements of the course, program, service, activity or facility are compromised by the accommodations.

REQUESTING AN ACCOMMODATION*

**Following this process is not a guaranteed approval; diagnoses and accommodation requests must still meet federal guidelines. Inadequate documentation may be sent back to the provider and accommodation requests that are not identified as "reasonable" may be denied.*





**The following are additional procedures, processes, and definitions.
This is not an extensive list of accommodations available.**

Personal Services

According to law and regulations, colleges and universities are not required to provide “personal services” to students with disabilities. Examples of common personal services include but are not limited to private tutoring, personal care attendants, personally prescribed medical devices, personal transportation and personal assistance to transport books or other personal items.

Students can contact the Center for Academic Success for referrals to resources that are available to all students, or available within the community (campus tutors, etc.) NUNM is committed to student success; however, the University does not require students to use accommodations nor provide them unless requested by the student

Testing Accommodations

Students granted testing accommodations are responsible for contacting the Testing Center at the beginning of each term to schedule exams, tests and quizzes. It is advised that students schedule the entire term of exams upon receiving the approved accommodation. Unscheduled testing will not be allowed.

Exam requests submitted less than three days prior to the exam will be considered on a case-by-case basis as space permits. There is no guarantee that late exam requests will be accommodated, unless the accommodation was granted after the expected deadline (i.e., accommodation granted on Tuesday may be applied for a Thursday exam).

Pop quizzes should be scheduled as soon as students are aware that pop quizzes may be planned for their classes, so arrangements can be made with them and the faculty member.

Students should work with faculty and/or faculty support regarding accommodations for online/Moodle exams. Moodle has the ability to provide extended time for timed exams.

Rescheduling of exams are only granted for approved absences. See complete Absence Policy for more information (Section 4).

Students who are granted testing accommodations are allowed but not required to use their accommodation. If the student chooses to take their examination with class and faculty, they have that right.

All students, with or without accommodations, are held to the same Academic Integrity Policy (Section 14.5). Any student observed utilizing any unauthorized materials or resources during an exam will be reported to faculty. Staff administering exams have the right to stop an exam at any time if academic dishonesty is witnessed or suspected.

Modified Schedule

Modified Schedule is an accommodation category, which is approved for a limited set of circumstances, which may include courses being taken during another term or specific time requirements for class/shifts. In order to have access to a modified schedule students must have gone through the Academic Accommodation process.

If and when the accommodation has been granted, the Office of the Registrar will be notified and it is the student’s responsibility to schedule a meeting with the registrar to discuss processes and deadlines. Due to limitations within academic policies and requirements, some alterations of schedule will not be considered “reasonable” (i.e., customization that puts student at risk for not meeting Satisfactory Academic Progress) and will be determined by the Registrar and the Center for Academic Success.



Reduced Course Load and/or Track Deviation

Students whose disability limits their ability to complete a full time load may be eligible for a reduced course load (8-11 credits is considered full time depending on program). Students will still be responsible for maintaining satisfactory academic progress (Section 7). In addition, students who are on federal financial aid and receive an accommodation for a reduced course load need to meet with the director of financial aid. Reduced course load and/or Deviation from Track may result in change of financial aid eligibility.

Medical Exemptions to Participate in Labs

Techniques such as drawing blood, placing IVs, performing manipulations, acupuncture, etc. are needed in order to acquire the skills needed to graduate. All classes where such participation is required have informed consent forms that list the relative risks of the procedures that students sign when they enter the class.

However, there are some medical conditions that meet the need to request an accommodation from specific types of classes. For example, students may receive an accommodation from phlebotomy or IV therapy labs (where needles are inserted into veins in the arm) for the following:

- Documented, untreated or uncontrollable bleeding disorders
- Localized acute infection in the arm being used for venipuncture
- Documented systemic bacterial infection
- Demonstrated severe vasovagal response that has not been amenable to treatment

Students are required to follow the Disability and Academic Accommodation Policy when requesting an accommodation from a techniques class. The personal physician who writes the documentation may not be the faculty member teaching the course. Faculty who observe students who should not participate are encouraged to contact their dean.

Students without a formal accommodation will not be given permission to abstain from participation in a techniques class unless approved by the program dean and director of academic success & access.

Service Animals

In accordance with the Americans with Disabilities Act (ADA), service animals are permitted in campus facilities for persons with a disability (including but not limited to psychiatric, cognitive, mental, communication, physical and sensory disabilities).

Students requiring the assistance of a service animal on campus may, but are not required to, contact the director of academic success & access to ensure adequate assistance and be knowledgeable should questions from staff/faculty arise. NUNM does not allow other animals, including emotional support or comfort animals, on campus.

For the complete policy and guidelines for service animals please see section 16.6 in the Student Handbook.



Service Animal Policy (Section 16.6 NUNM Student Handbook)

In accordance with the Americans with Disabilities Act (ADA), service animals are permitted in campus facilities for persons with a physical disability (including but not limited to psychiatric, cognitive, mental, communication, physical and sensory disabilities). The disability must limit one or more daily life activities and the person must be regarded by a healthcare practitioner as having such a disability that requires the use of a service animal.

The ADA recognizes only dogs (no weight, size or breed limitations) as service animals. The service animal must be housebroken, on a leash or harness, and individually trained to do work or perform tasks for the benefit of an individual with a disability. The service the animal is providing must be directly related to the person's disability (i.e., retrieve medicine, offer stability, alert to seizures, etc.). Dogs that meet this definition are considered service animals under the ADA regardless of whether they have been licensed or certified by a state or local government. Dogs whose sole purpose or function is to offer comfort and/or emotional support do not qualify as service animals.

Under law, NUNM and its members are not allowed to ask an individual about the nature/extent of their disability; require documentation proving that the animal is an assistance animal, or; require that the individual pay any fee for the assistance animal. However, to ascertain if the animal presented on campus is a service animal, the university may ask:

- Is the animal required due to a disability?
- The nature of the work/task that the animal is trained to do/perform.

Care and Maintenance of Service Animals

The student handler of a service animal must be in full control of the service animal at all times, including but not limited to basic obedience commands and control of leash/harness. The care and supervision of a service animal is solely the responsibility of its student handler and cannot be handed over to another person. Care and maintenance includes but is not limited to:

- Ensuring the animal is housebroke and all/any of the animal's waste elimination is done in appropriate areas;
- Always carrying equipment sufficient to clean up the animal's waste whenever the animal and handler are on university property; and
- Be responsible for the proper disposal of the animal's waste and for any damage caused by the waste or its removal.

Denial or Exclusion of Service Animal(s)

NUNM may deny or exclude a service animal only if the animal:

- Is a direct threat (e.g., biting, nipping, attacking)
- Creates undue financial and administrative burden
- Fundamentally alters any services, programs or activities (e.g., continuous barking or whining unrelated to their service role, growling during class and/or clinic shifts, etc.)

The exclusion of a service animal will be based on an individual assessment based on recent credible, objective evidence relating to the specific animal. The university will then work with the student to identify other means of adequate accommodations.

This policy is limited to service animals as identified above; an animal that provides emotional support, comfort, or companionship (therapy or comfort animals) is not included as a protected assistance animal under Oregon laws, and is expressly excluded as an assistance animal under the ADA—and therefore not allowed on campus (see Section 12.7).

Students requiring the assistance of a service animal on campus should contact the director of academic success and access to ensure adequate assistance, and become familiar with NUNM's service animal policies should questions from staff/faculty arise.



Additional Resources and Local Support Networks

This is not a comprehensive or complete list of resources. NUNM and the Center for Academic Success are also not responsible for changes within individual businesses (i.e., costs, hours, licensure status, etc.). NUNM encourages students to do individual research and find the resource that meets their needs best.

Psychological Assessments and Learning Disability

Psychological Assessments and Learning Disability testing is conducted when a student has a question about how they learn, why certain tasks are harder than others, if they have a learning disability, how to maximize their learning strengths, and other academic-related learning questions.

NUNM does not pay for or conduct these assessments. For more information and pricing please contact:

Pacific Psychological and Comprehensive Health Clinic (Pacific University)

503.352.2400 or www.pscpacific.org

They offer a 12 hour complete diagnosis and examination (spread over several days).

Mindsights Psychological Assessment Services

503.222.0707 or www.mindsightspx.com

MindSights offers a wide array of psychological testing, assessment, and consultation services.

Adult Neuropsychology Clinic (OHSU)

503.494.6176

The Adult Neuropsychology Clinic provides comprehensive evaluations for adults age 18 and above. Neuropsychological examinations typically take between 4 and 5 hours.

Northwest Reading Clinic

503.620.2223 or www.northwestreadingclinic.com

Northwest Reading Clinic specializes in diagnosing and treating difficulties with comprehension, reading and spelling, including dyslexia.

Language Skills Therapy, Inc.

503.924.3157 or languageskillstherapy.org

Language Skills Therapy is a group of educational therapists who are individually matched with students. Language Skills Therapy offers diagnosis, evaluation, and remedial therapy for individuals with developmental Dyslexia.

Additional Resources

Adult Attention Deficit Disorders Clinic (OHSU) – not a full psychological assessment

503.494.6179 or rakhlin@ohsu.edu

The Adult Attention Deficit Disorder Clinic provides initial evaluation for diagnosis of adults with residual ADD and follow-up treatment for patients who have already been diagnosed. Full psychological assessments not available.

Tools for Life (Georgia Tech)

<http://www.gatfl.org/favorite-search.php>

Search for apps that assist with living, learning, work and play – organizational tools, list makers, e-books, note taking, etc. Search apps for iOS, Android, Blackberry and Microsoft ranging from Free-\$9.99 and up!

North Avenue Education

503.468.6905 northaveeducation.com

North Avenue Education offers a variety of services from specific subject tutoring, writing and academic coaching, as well as test preparation. Their coaching addresses a broad range of study skills, time management, and organization strategies. Writing Coaching can address learning how to research and organize papers, develop writing styles, and editing. Contact for current prices.



PSU Writing Center writingcenter.pdx.edu

You do not need to have a Portland State University student ID to schedule an appointment, or visit their walk in hours. The Writing Center aims to help writers at any stage of the writing process, from brainstorming to the final draft.

Counseling Resources

The NUNM Student Counseling Center offers unlimited number of appointments (based on availability). NUNM Counseling staff are approved licensed practitioners who can assist with documentation for clients with some disabilities. Please work directly with a counselor to learn more about these limitations.

Appointments are by phone 503-552-1780 or online at studentservices.nunm.edu/counseling

If a student is seeking counseling resources outside of the NUNM Counseling Center, the counseling staff can also offer referrals to other professionals in the Portland area. Please contact the appointment line for details.